

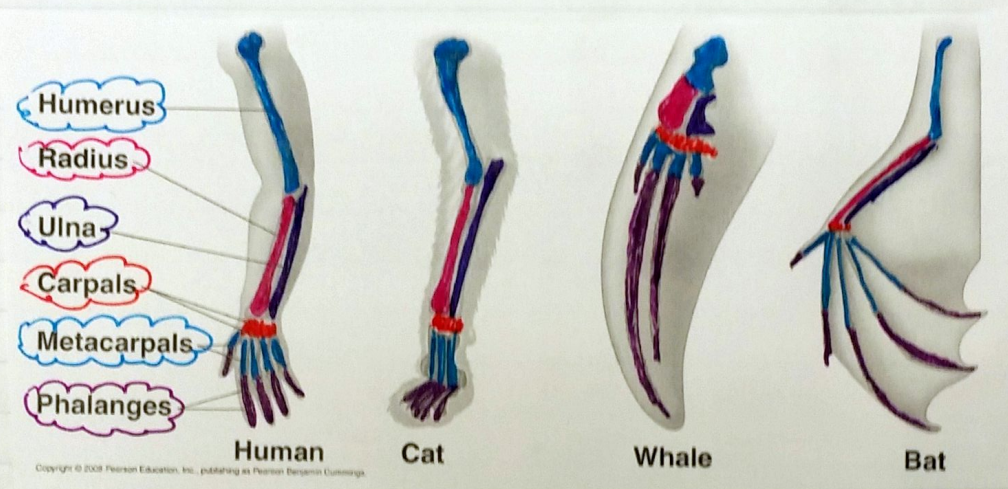
Evidence of Change Over Time

Homologous Structures = similar structures and functions in two or more different species.

• even if they look different on the outside

we are noticing they have similarities inside

Ex: appendages, embryos



Vestigial Structures = parts of an organism that seem to have no purpose, but may have in the past by a previous ancestor

Ex: whales = have hip bones

humans = appendix, tail bone, body hair

astyanax fish = they are blind, but have eyes

ostrich = wings