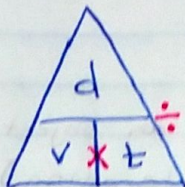


Velocity

$$\text{velocity} = \frac{\text{distance}}{\text{time}}$$

(same equation as speed!)



Velocity is the same as speed EXCEPT that velocity needs a specific direction.

$$30 \text{ mi/hr} = \text{SPEED}$$

$$30 \text{ mi/hr } \underline{\text{North}} = \text{VELOCITY}$$

- Since velocity needs a direction we call it a VECTOR quantity.

Vector = a measure that has an amount of something AND a direction