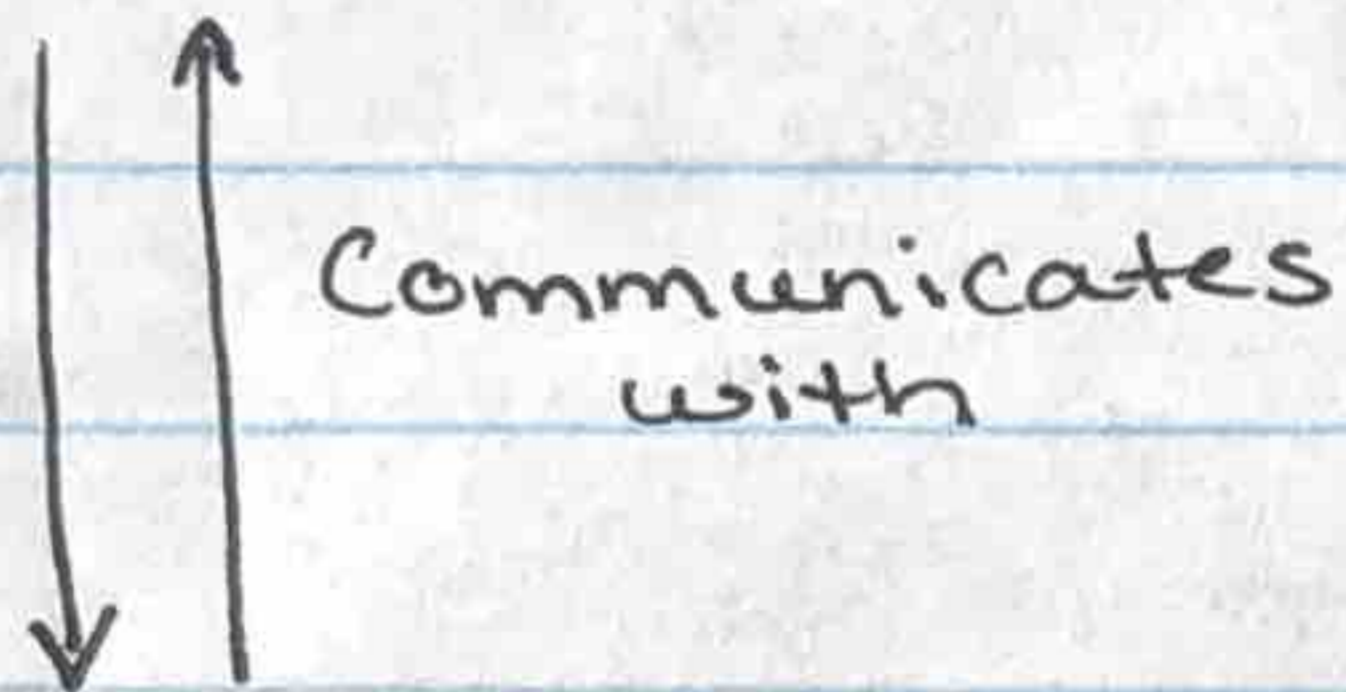


Nervous System Organization

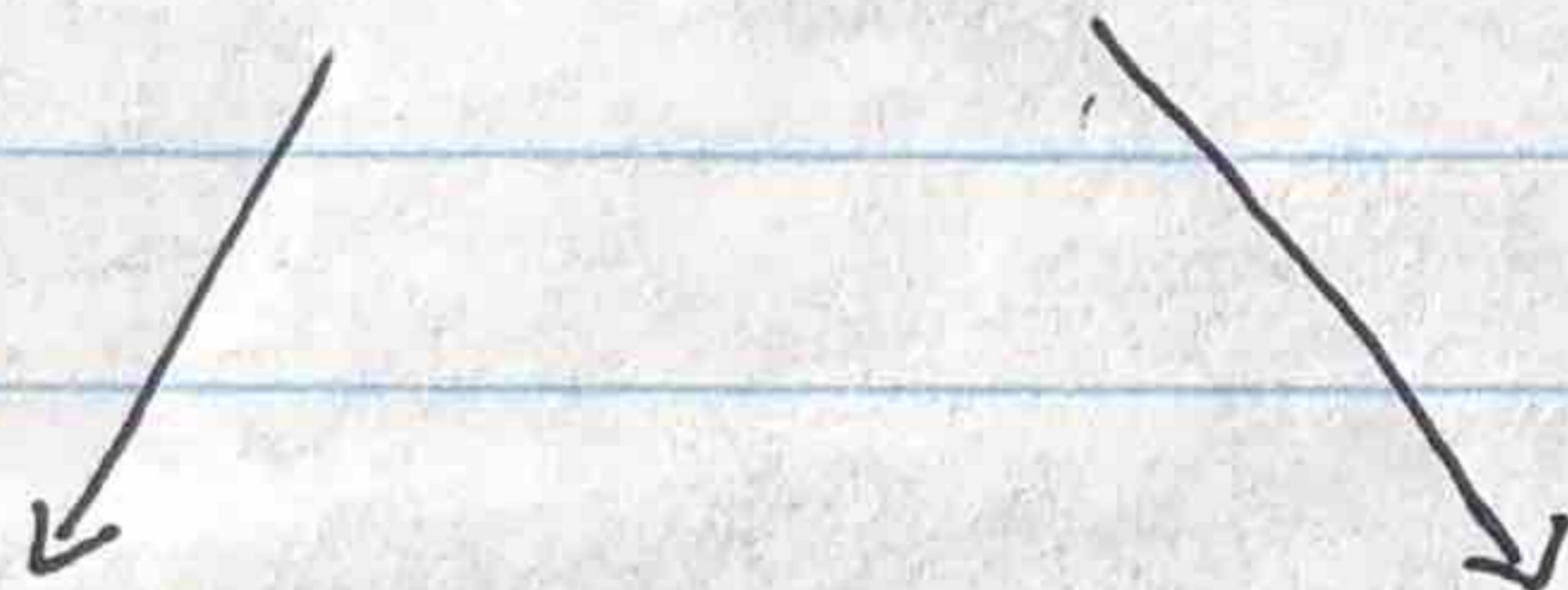
Central Nervous System (CNS)

- Brain and spinal cord



Peripheral Nervous System (PNS)

- All the nerves that branch off of the CNS



Sensory Division

- afferent neurons
- pick up stimulation

Motor Division

- efferent neurons
- Sends direction from brain to muscles + glands

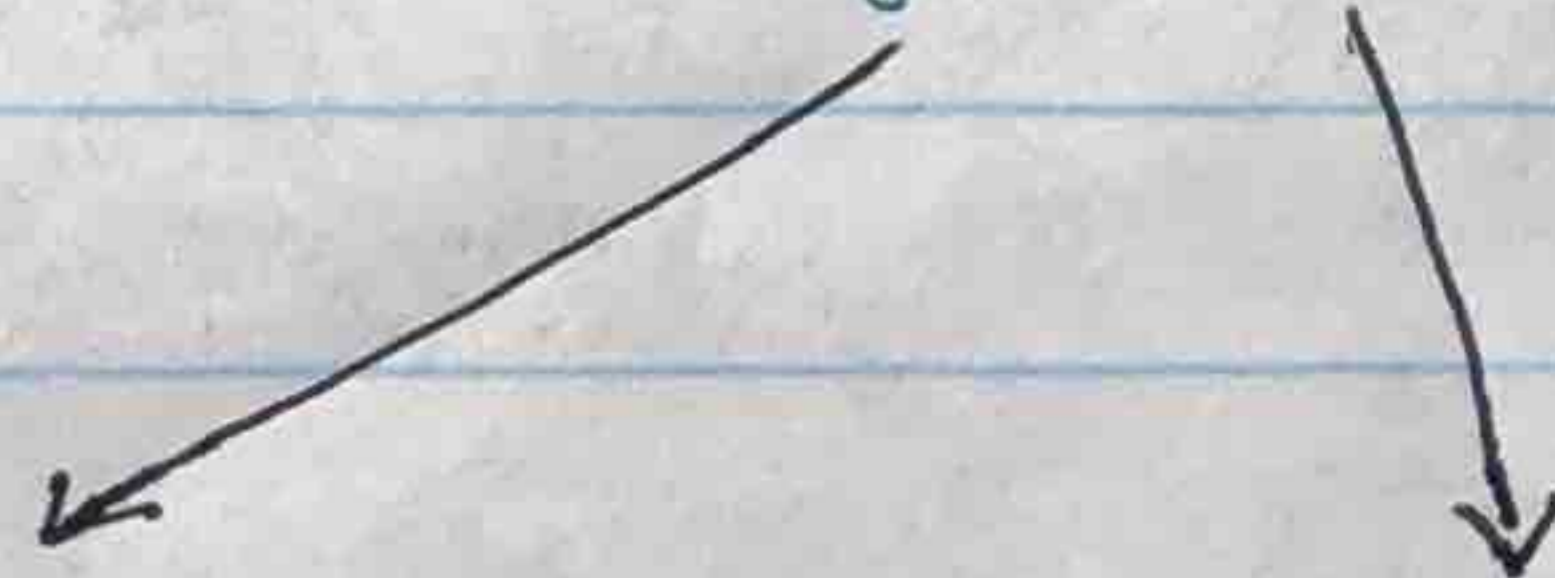


Somatic NS

- voluntary actions
- controls skeletal muscles

Autonomic NS

- involuntary actions
(heart beat, breathing, digestion, etc.)

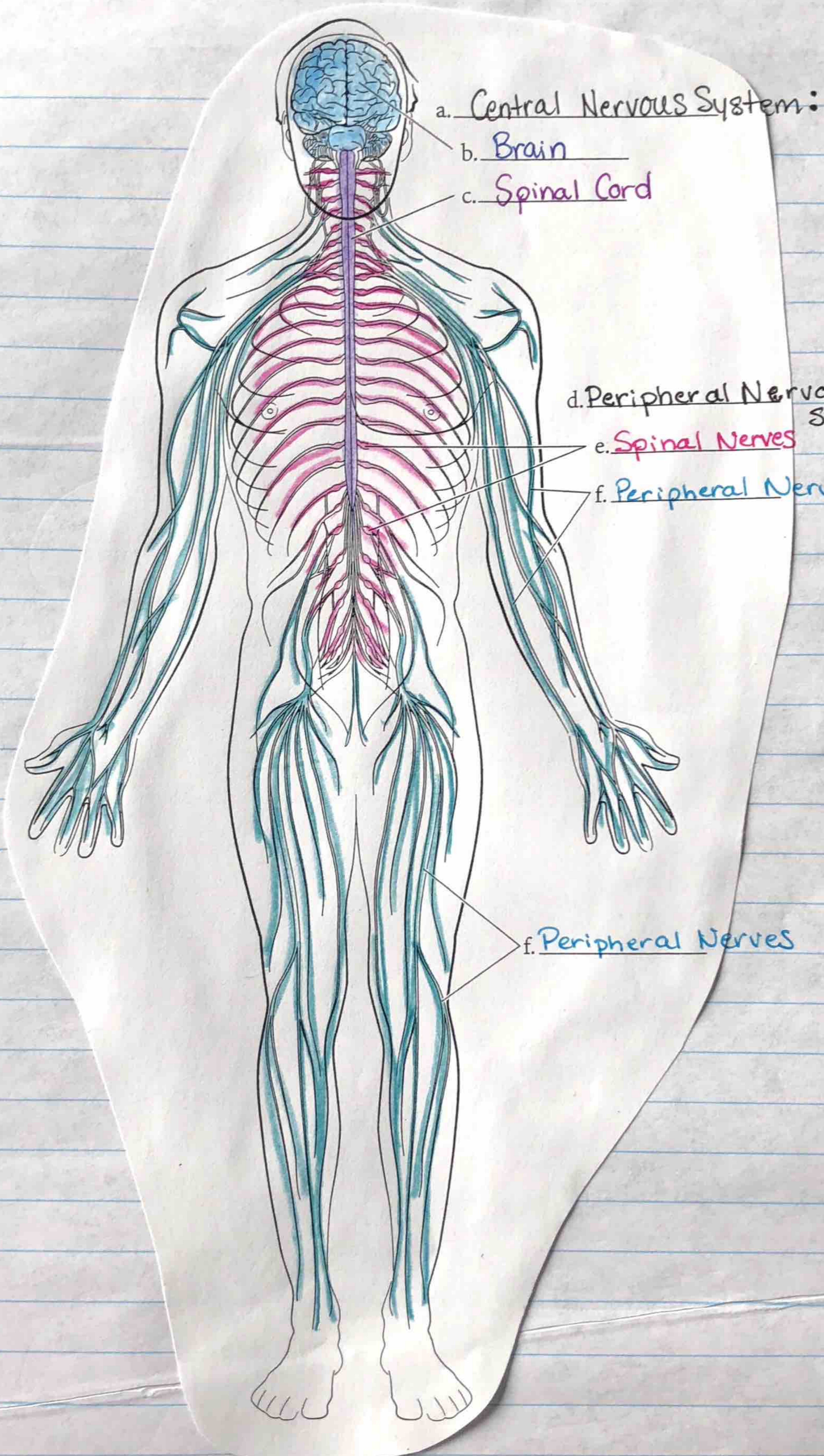


Sympathetic NS

- mobilizes "fight or flight" responses

Parasympathetic NS

- relaxes, you, "rest and digest"



a. Central Nervous System:

b. Brain

c. Spinal Cord

d. Peripheral Nervous System:

e. Spinal Nerves

f. Peripheral Nerves

f. Peripheral Nerves