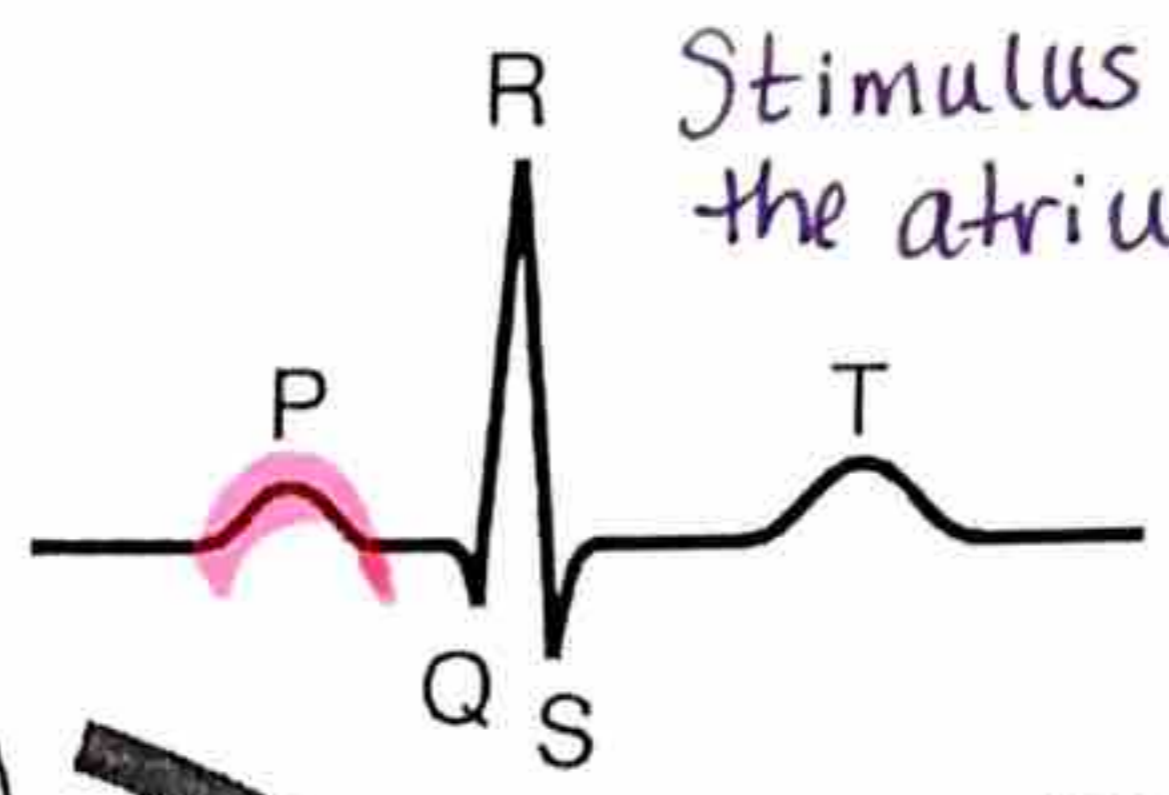
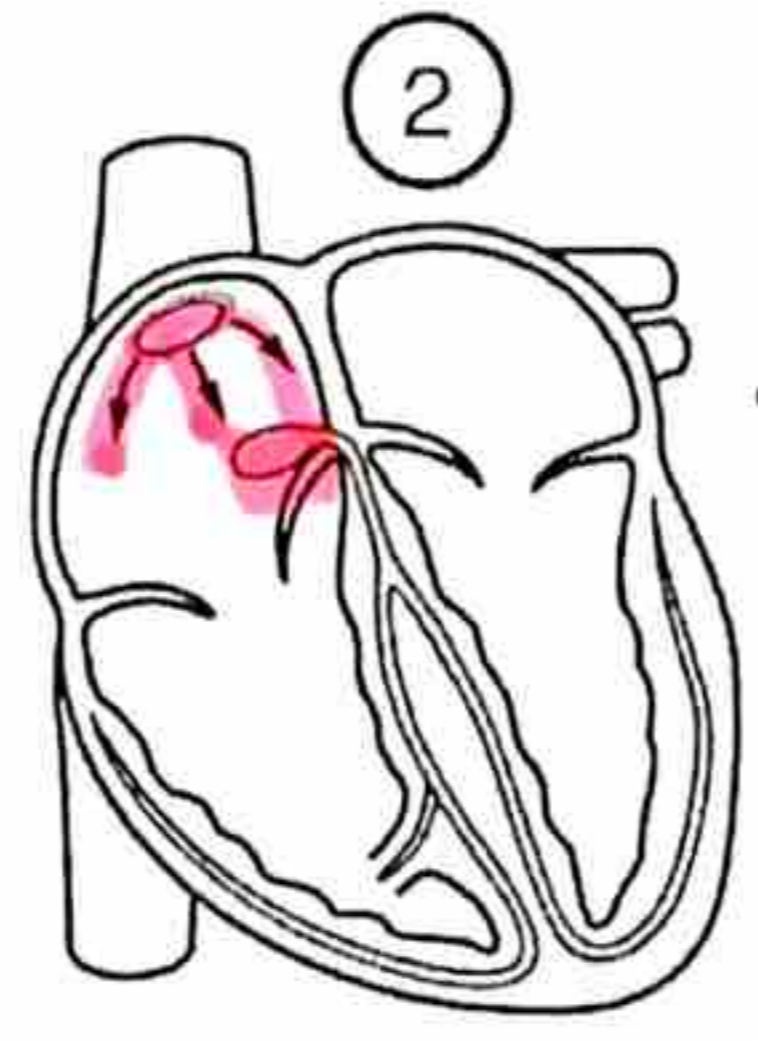
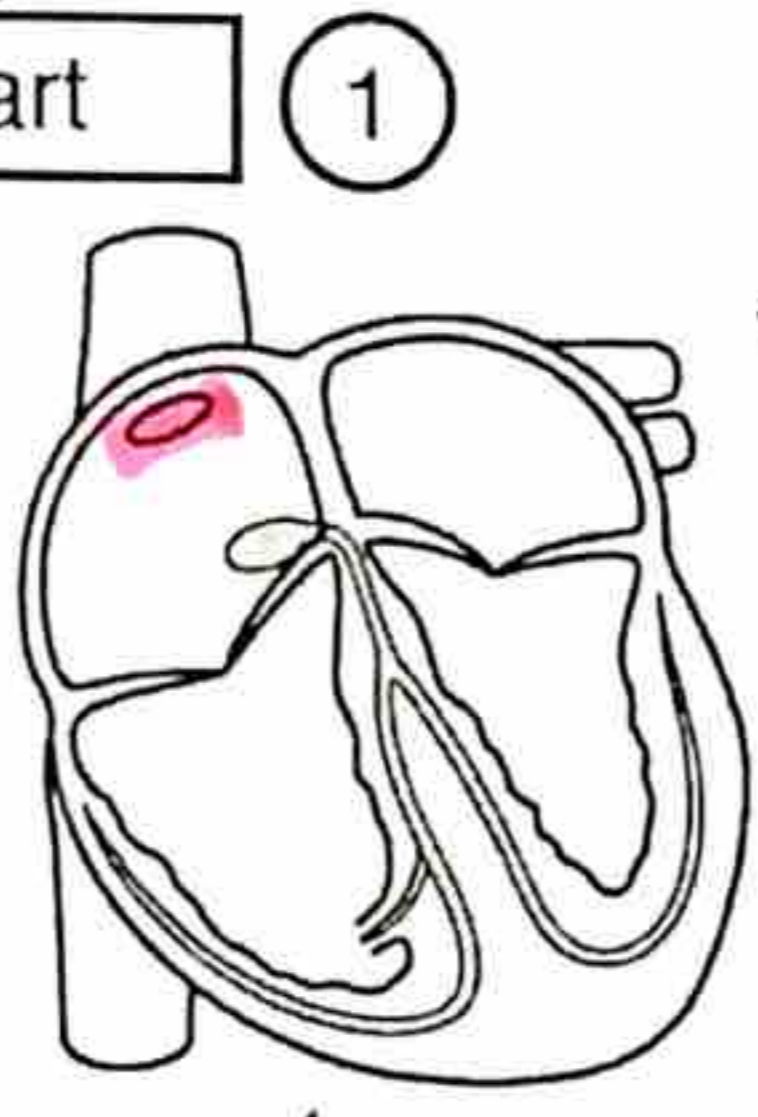
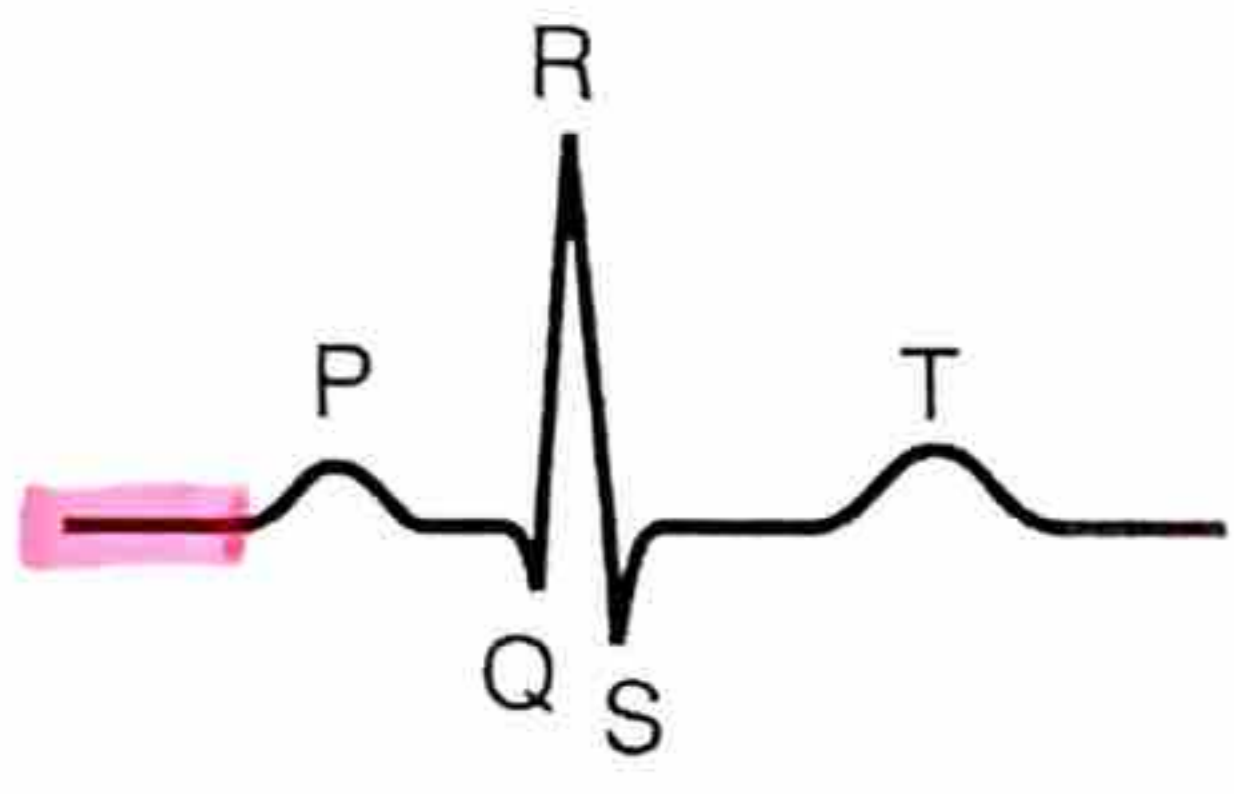


SA node activity begins

Start

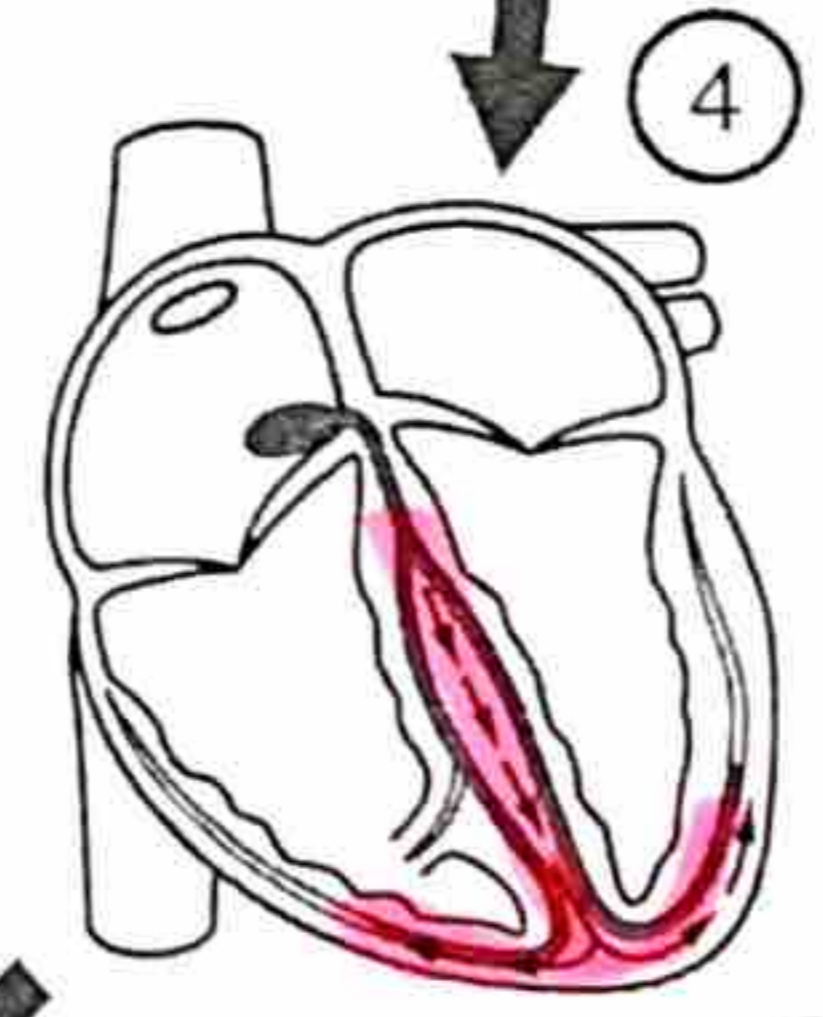
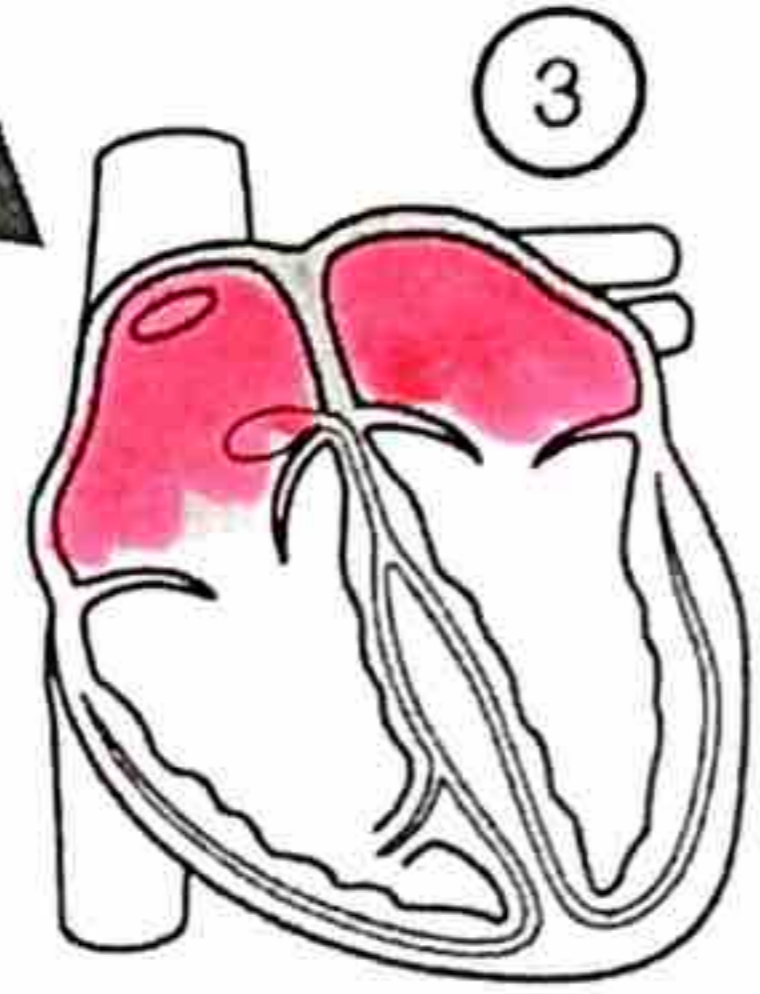
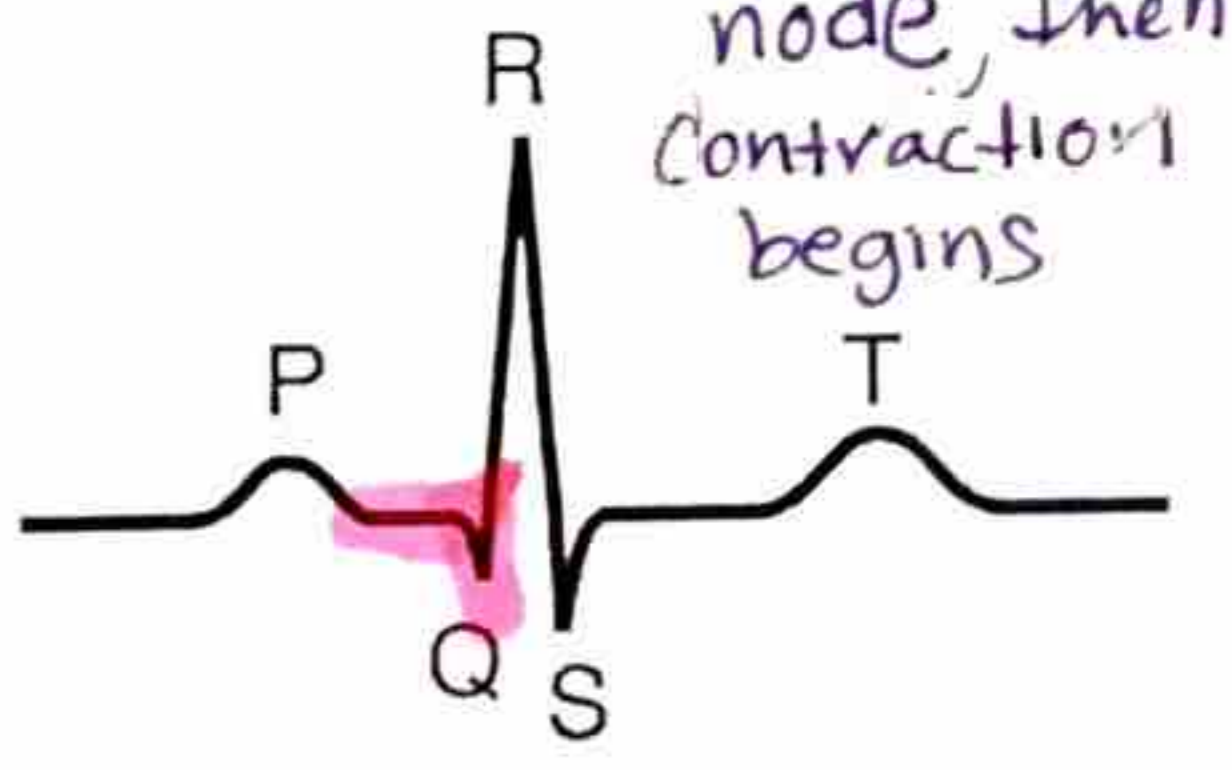
SA = sino atrial



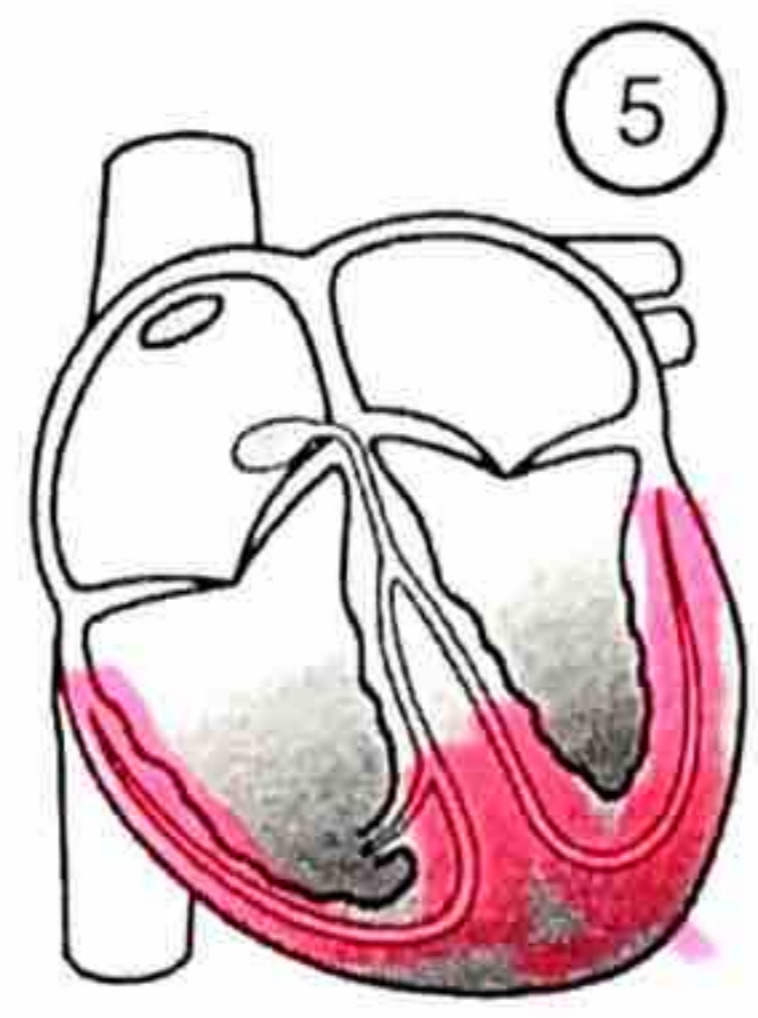
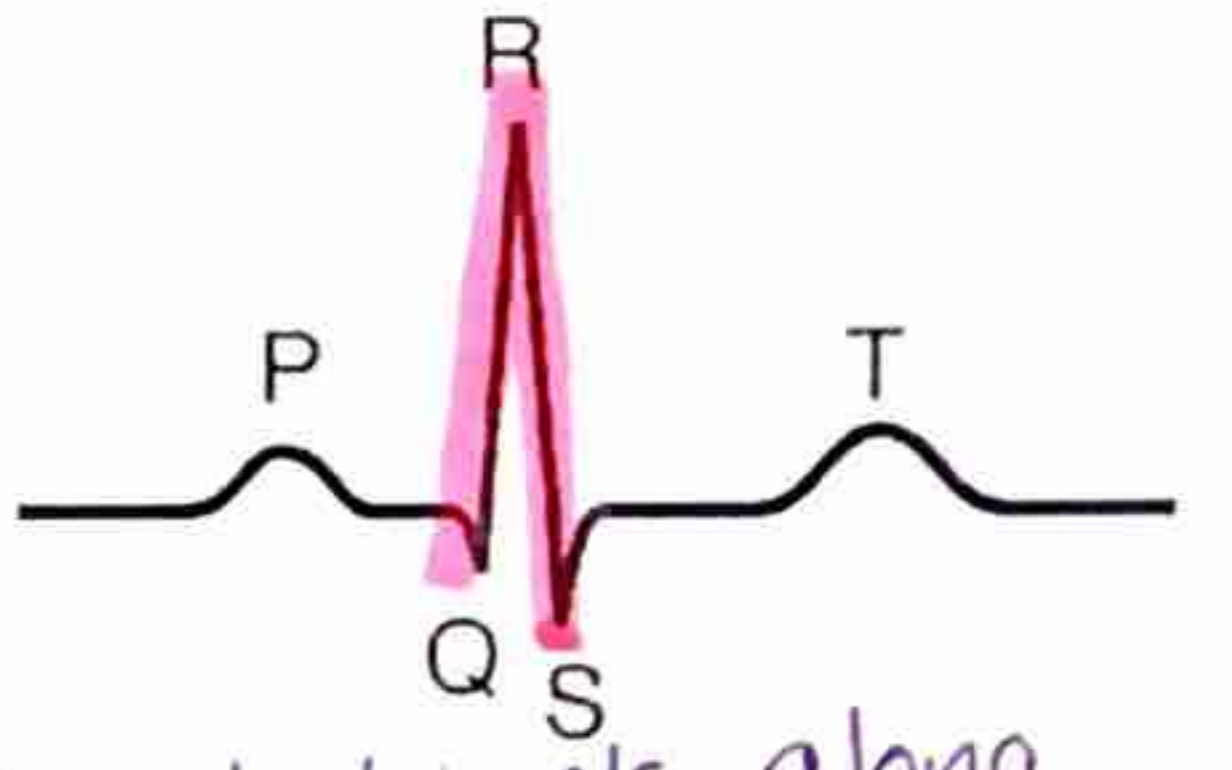
Stimulus spreads over the atriums to the AV node

AV = atrial ventricular

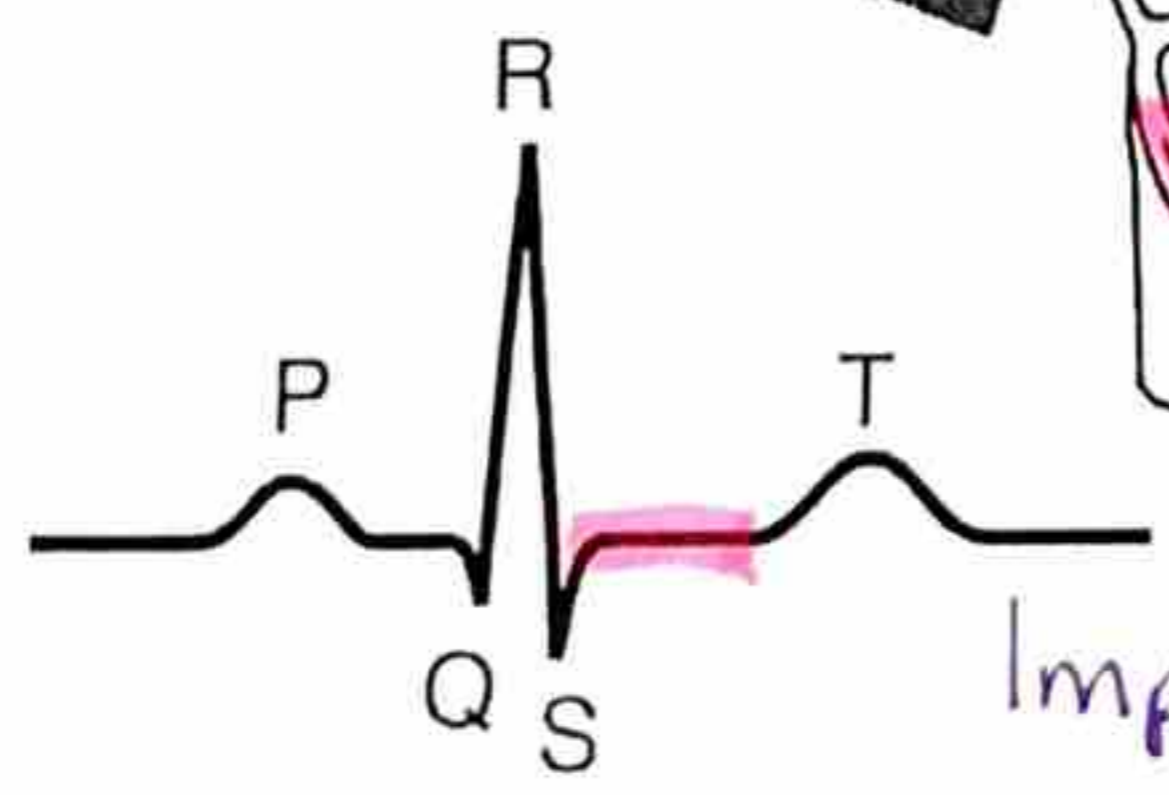
10 msec delay at AV node, then contraction begins



Signal travels along the septum within the AV bundle (bundle of his)



Impulse is distributed to Purkinje fibers and into the ventricular myocardium



Ventricular contraction happens

